

# AERIUS CALCULATOR

Dit document bevat resultaten van een stikstofdepositieberekening met AERIUS Calculator. U kan dit document gebruiken voor de onderbouwing van depositie onder de drempelwaarde (0.05 mol/ha/j) in het kader van de Wet natuurbescherming, afhankelijk van de door u gekozen rekeninstellingen.

De berekening op basis van stikstofemissies gaat uit van de componenten ammoniak (NH<sub>3</sub>) en stikstofoxide (NO<sub>x</sub>), of één van beide. Hiermee is de depositie van de activiteit berekend en uitgewerkt. Op basis van de gekozen rekeninstellingen zijn de resultaten op Natura 2000-gebieden inzichtelijk gemaakt.

Wilt u verder rekenen of gegevens wijzigen? Importeer de pdf dan in de Calculator. Voor meer toelichting verwijzen we u naar de websites [pas.bij12.nl](http://pas.bij12.nl), [www.aerius.nl](http://www.aerius.nl) en [pas.natura2000.nl](http://pas.natura2000.nl).

## Calculation Situation 1

- ▶ Characterization
- ▶ Emission
- ▶ Deposition nature areas
- ▶ Deposition habitat types

Further explanation of this PDF can be found in a corresponding reading guide. This reading guide and other documentation can be accessed via:

[www.aerius.nl](http://www.aerius.nl).

# AERIUS CALCULATOR

## Contact

Legal entity

Facility Location

Wageningen Marine Research

-

## Activity

Description

Stort 20

Calculation date

Calculation year

01 May 2017, 14:49

2017

Calculation options

Calculated with Wnb law review.

## Total emission

Situation 1

NOx

193.33 kg/y

NH<sub>3</sub>

-

## Deposition

Hectare with  
highest project  
contribution  
(mol/ha/y)

Nature area

Province

-

-

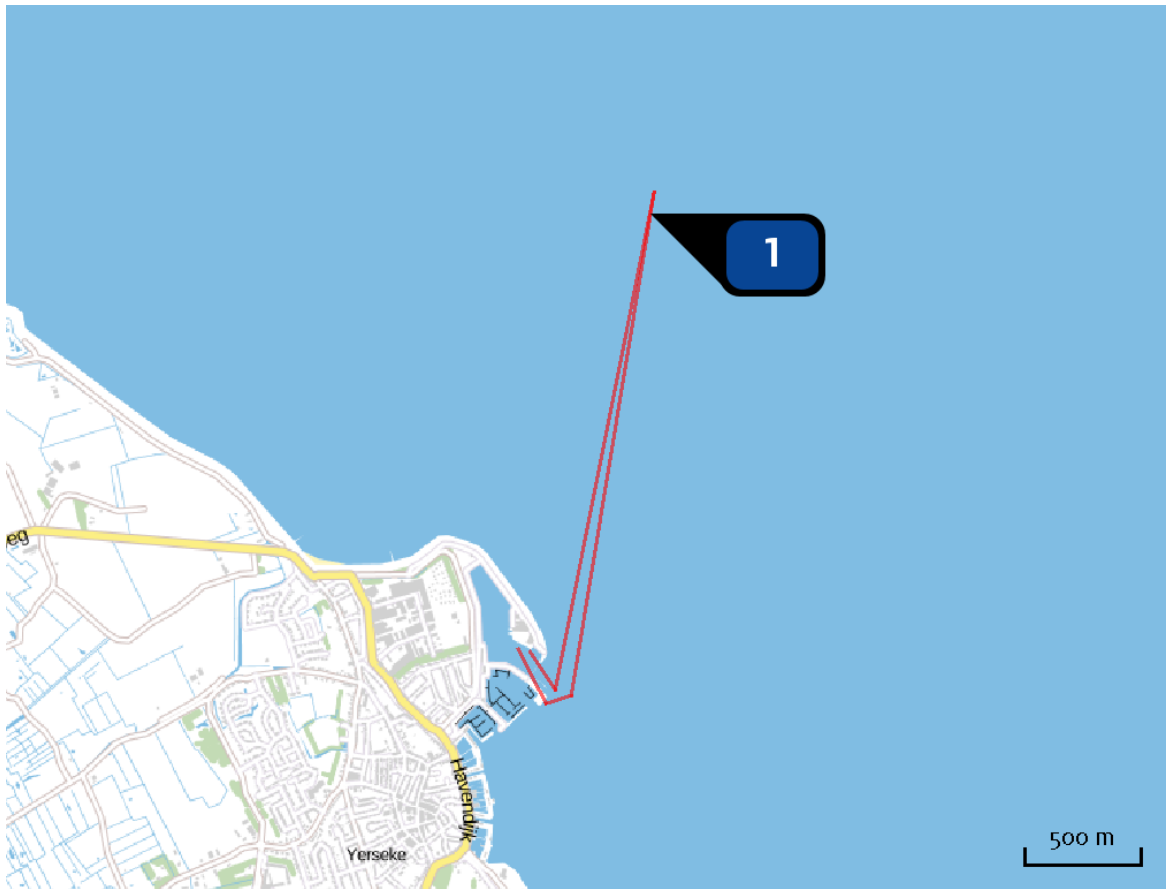
Situation 1

-

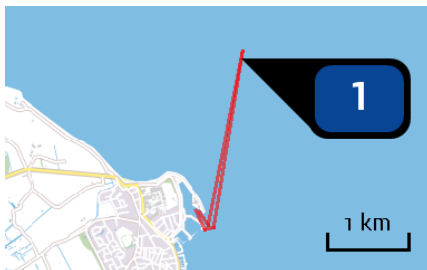
## Clarification

Passende Beoordeling

Location  
Situation 1



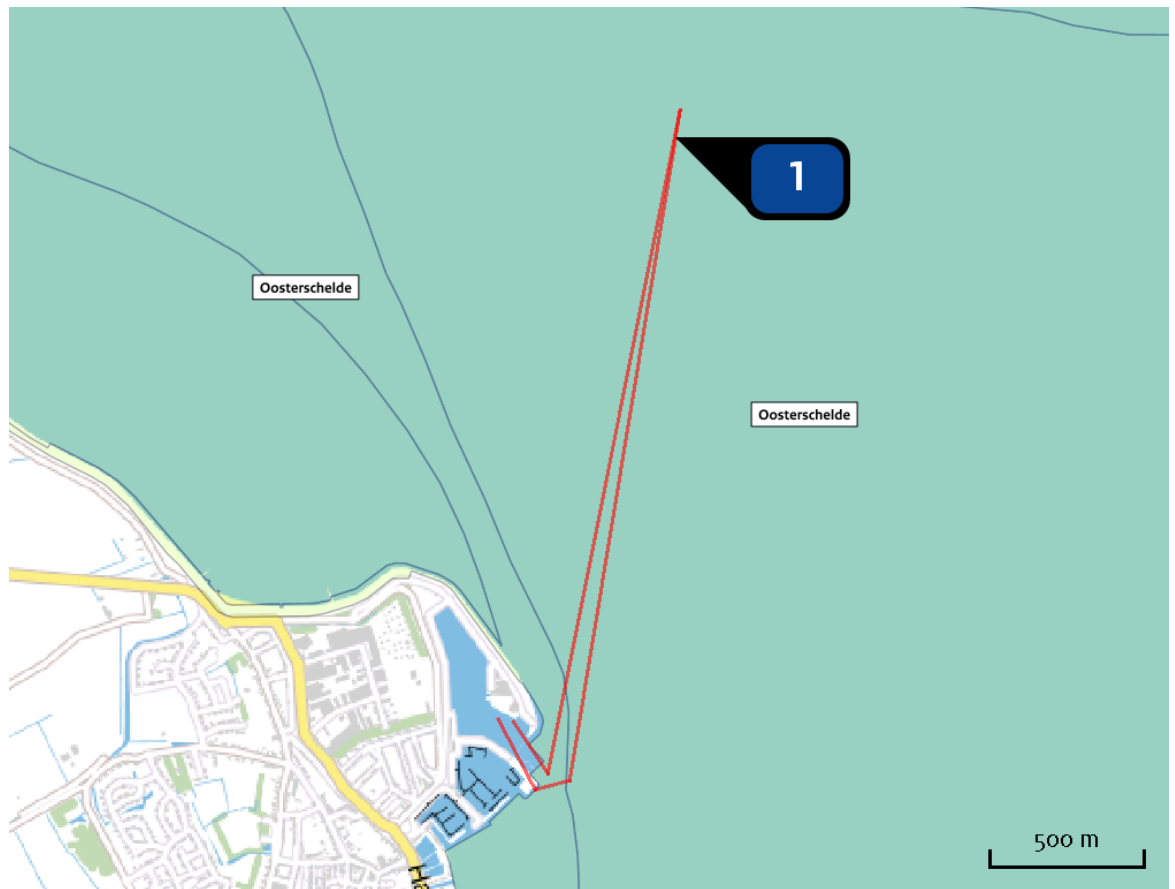
Emission  
(by source)  
Situation 1




Name **Source 1**  
 Location (X,Y) **63137, 392723**  
 NOx **193.33 kg/y**

Ship type	Description	Number of visits (y)	Substance	Emission
Koelschepen en Vissersschepen GT: 100-1599	YE	30	NOx	193.33 kg/y

Deposition



 Highest project contribution

 Highest project contribution per nature area

 Habitat directive

 Bird directive

 Habitat directive, Bird directive

## Disclaimer

Although the calculation is made with the utmost care, no responsibility will be taken with respect to the decisions taken based on the results of the calculation. The information provided can be used to substantiate a permit request. AERIUS accepts no responsibility for the content of information provided by third parties. The above data and corresponding results are valid till a new version of AERIUS is available. AERIUS is a registered trademark in Europe. All rights not expressly granted herein are reserved.

## References for calculations

This calculation is based on:

AERIUS [version 2016\\_20170324\\_a9b5d9a5ef](#)

Database [version 2016\\_20170301\\_feb336c45f](#)

For more information about the methodology and data see:

<https://www.aerius.nl/nl/factsheets/release/aerius-calculator-2015-handboek-o>